

THIS DRAWING IS AN INSTRUMENT OF SERVICE AND SHALL REMAIN THE PROPERTY OF CF7 DESIGN, LLC. WHETHER THE PROJECT FOR WHICH IT IS DESIGNED IS CONSTRUCTED OR NOT. THE DRAWING, CONCEPTS AND IDEAS CONTAINED HEREIN SHALL NOT BE USED, COPIED OR REPRODUCED WITHOUT THE EXPRESS WRITTEN APPROVAL OF CF7 DESIGN, LLC.

SUBMISSION OR DISTRIBUTION OF THIS DRAWING TO ANY OTHER PARTY WITHOUT THE WRITTEN APPROVAL OF CF7 DESIGN, LLC IS STRICTLY PROHIBITED. ANY VIOLATION OF THIS PROHIBITION SHALL BE PROSECUTED TO THE FULLEST EXTENT POSSIBLE.

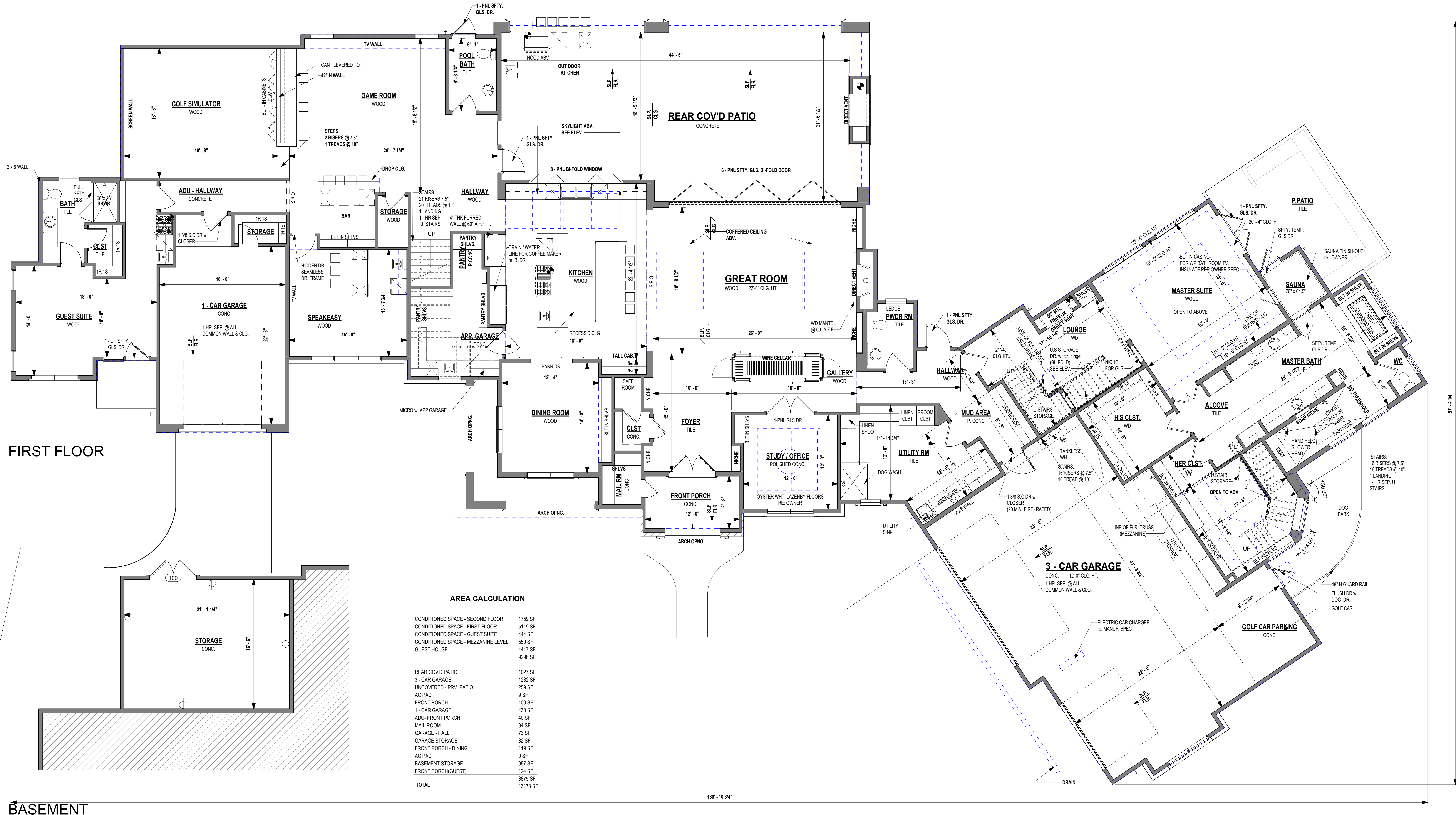
SCHAFF HOUSE
4411 Mirador Drive,
Austin, TX 78735

FIRST FLOOR PLAN +
FRONT ELEVATION

SHEET NO.

A2.0

© COPYRIGHT 2022 CF7 DESIGN, LLC.
ALL RIGHTS RESERVED



AREA CALCULATION

CONDITIONED SPACE - SECOND FLOOR	1759 SF
CONDITIONED SPACE - FIRST FLOOR	5119 SF
CONDITIONED SPACE - GUEST SUITE	444 SF
CONDITIONED SPACE - MEZZANINE LEVEL	559 SF
GUEST HOUSE	1417 SF
	9296 SF
REAR COVID PATIO	1027 SF
3 - CAR GARAGE	1232 SF
UNCOVERED - PRIV. PATIO	259 SF
AC PAD	9 SF
FRONT PORCH	100 SF
1 - CAR GARAGE	430 SF
ADU - FRONT PORCH	40 SF
MAIL ROOM	34 SF
GARAGE - HALL	73 SF
GARAGE STORAGE	32 SF
FRONT PORCH - DINING	119 SF
AC PAD	9 SF
BASEMENT STORAGE	387 SF
FRONT PORCH(GUEST)	387 SF
TOTAL	13173 SF

BASEMENT



NORTH ELEVATION

